

ATEŞLİ SİLAH YARALARI



Dr. İdris Deniz

Doğu Akdeniz Üniversitesi Hukuk Fakültesi

• ALET

- Namlu boyu
- Namlu çapı
- Yiv set
- Mekanizma
- Kurşun
 - Mermi çekirdeği
 - Saçma
- Barut

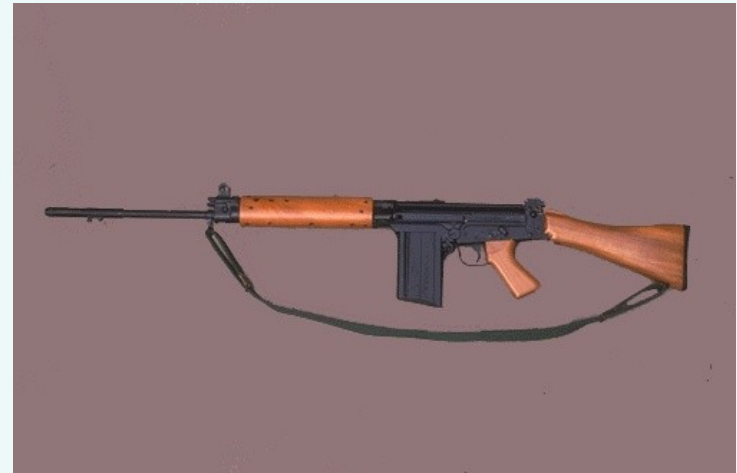


NAMLU BOYU

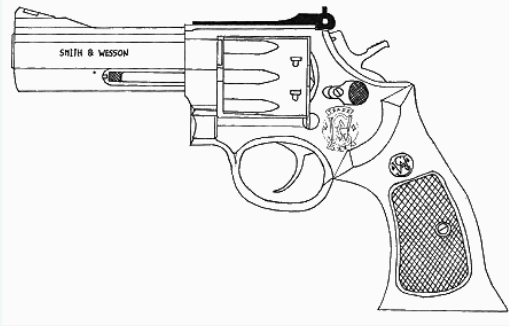
- Kısa namlulu



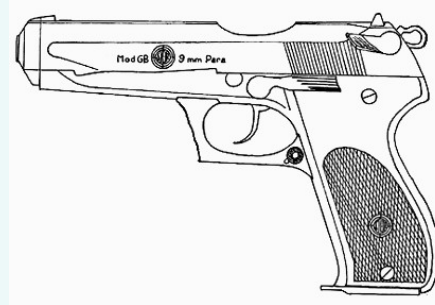
- Uzun namlulu



Mekanizma

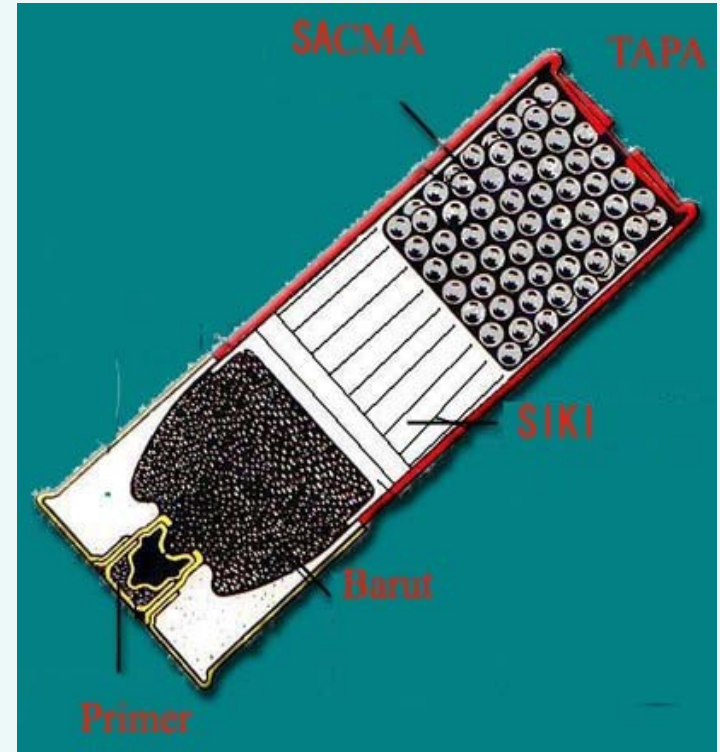
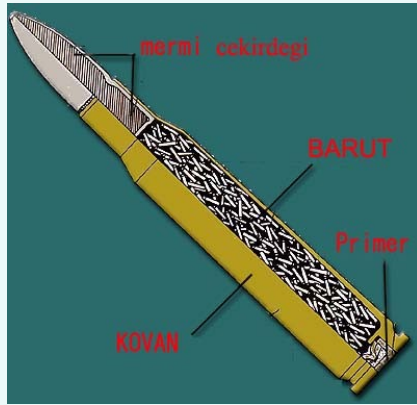


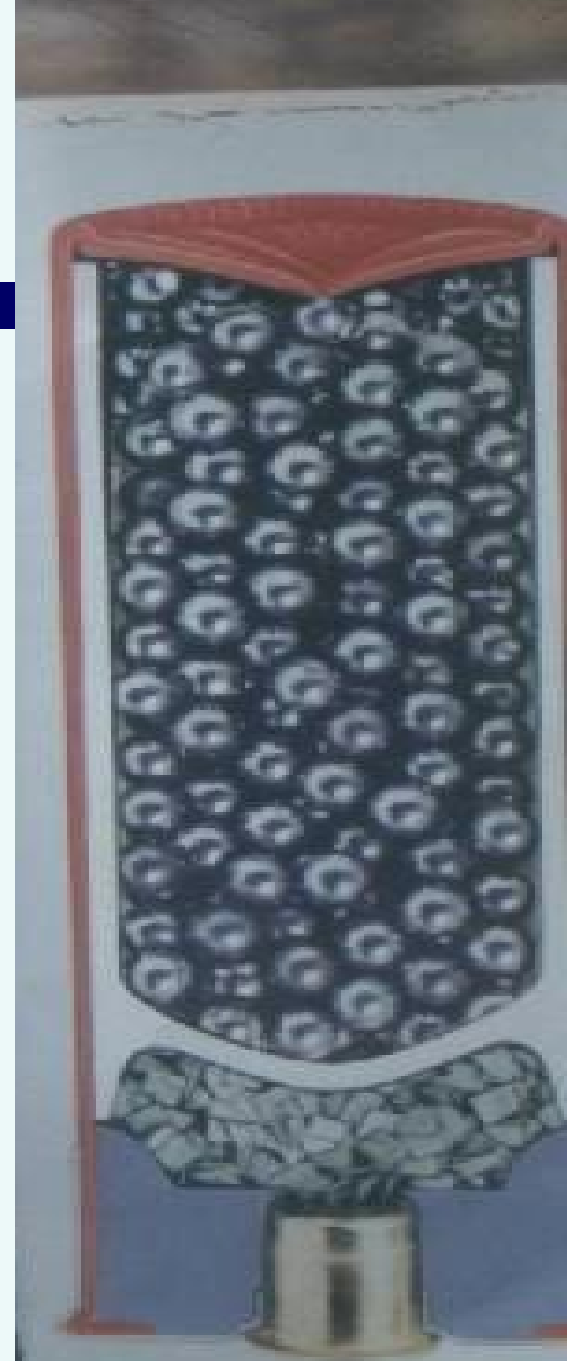
Revolver

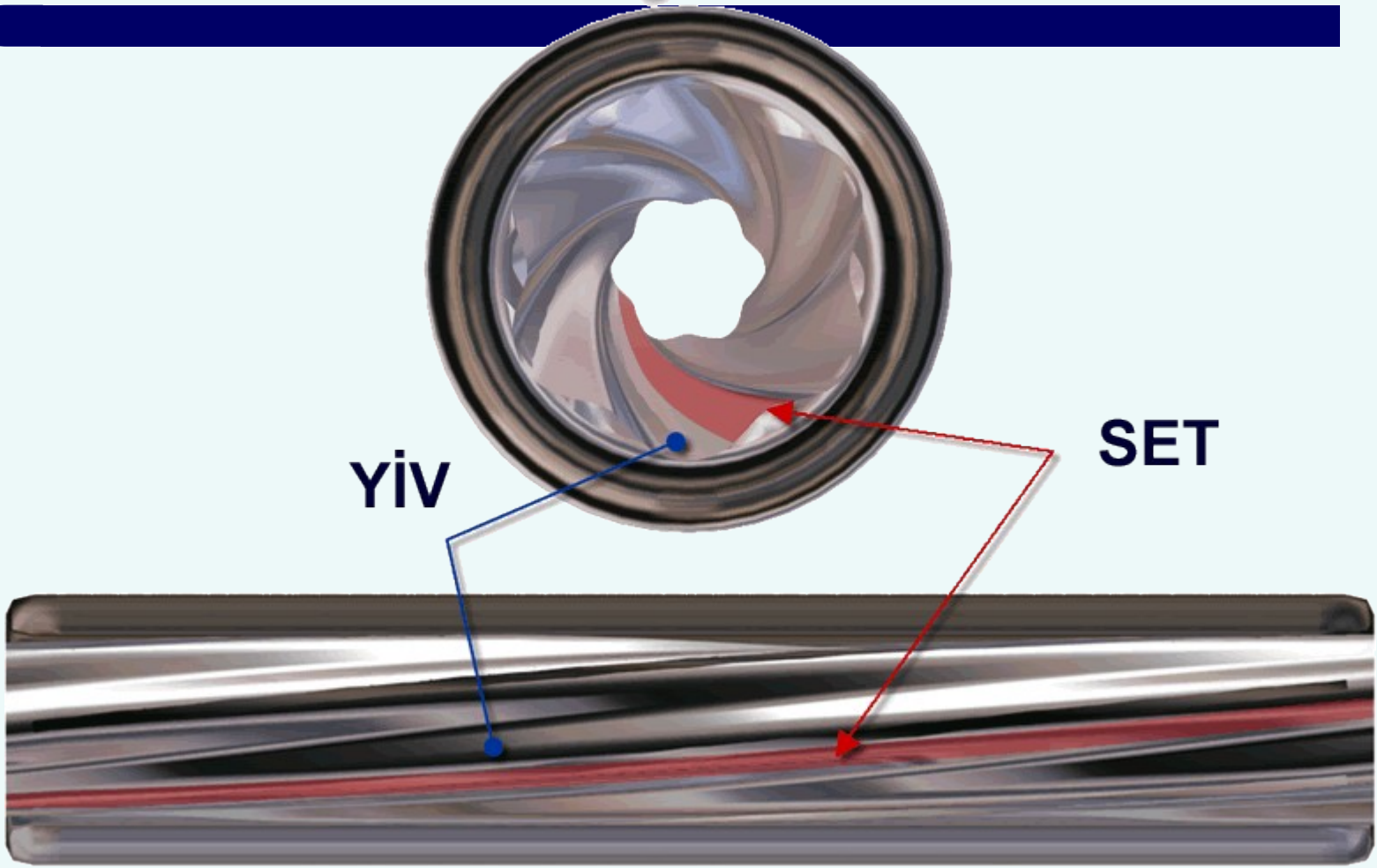


Yarı otomatik

Mermi - Fişek



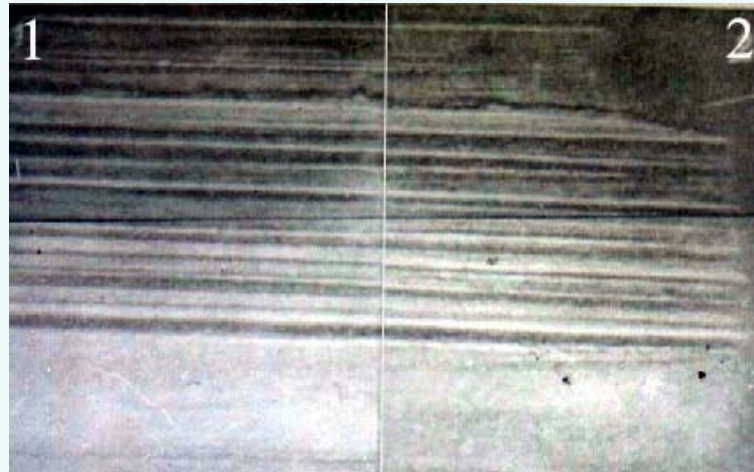
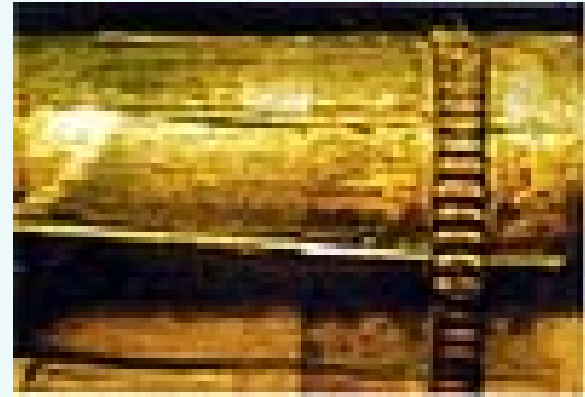
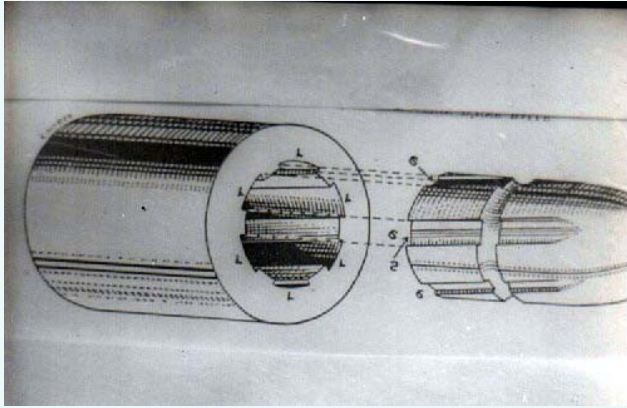




YIV

SET

Balistik Yiv ve set



ADLİ TIP

- Giriş – Çıkış
- Sayı
- Yaralanmanın ağırlık derecesi
- Atış mesafesi
- Silahın tipi
- Ateş eden el
- Orijin



YARA

- Giriş - çıkış
- Mesafe
 - Bitişik
 - Tam
 - Gevşek
 - Açılı
 - Bitişğe yakın
 - Yakın
 - Uzak



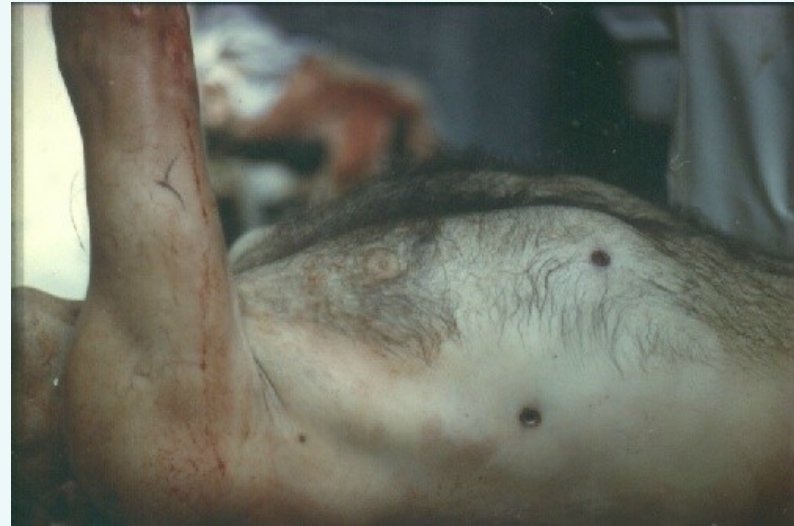
Giriş-Çıkış



Giriş deliği küçük – çıkış deliği büyük

İstisna ?

Giriş deliği çevresinde vurma halkası

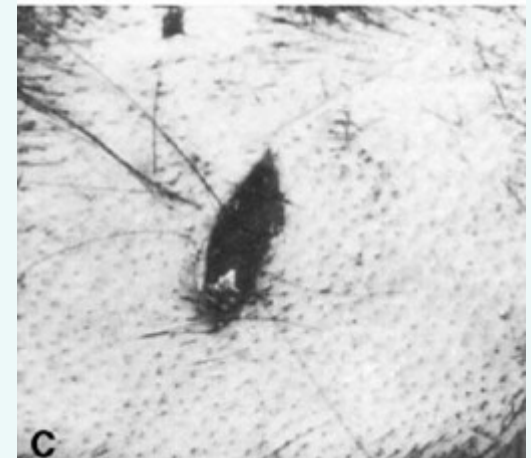
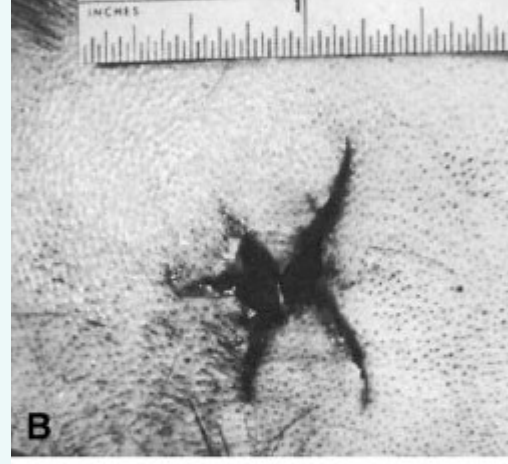
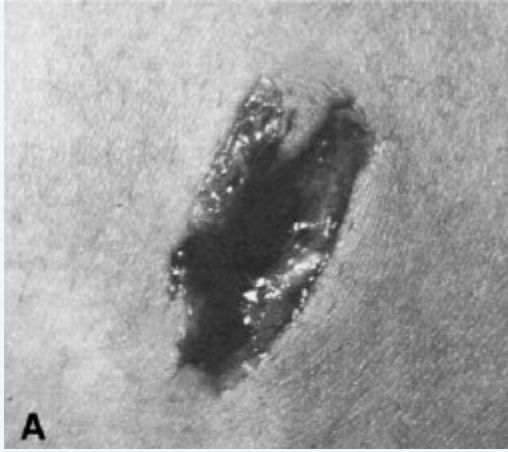


Çıkış

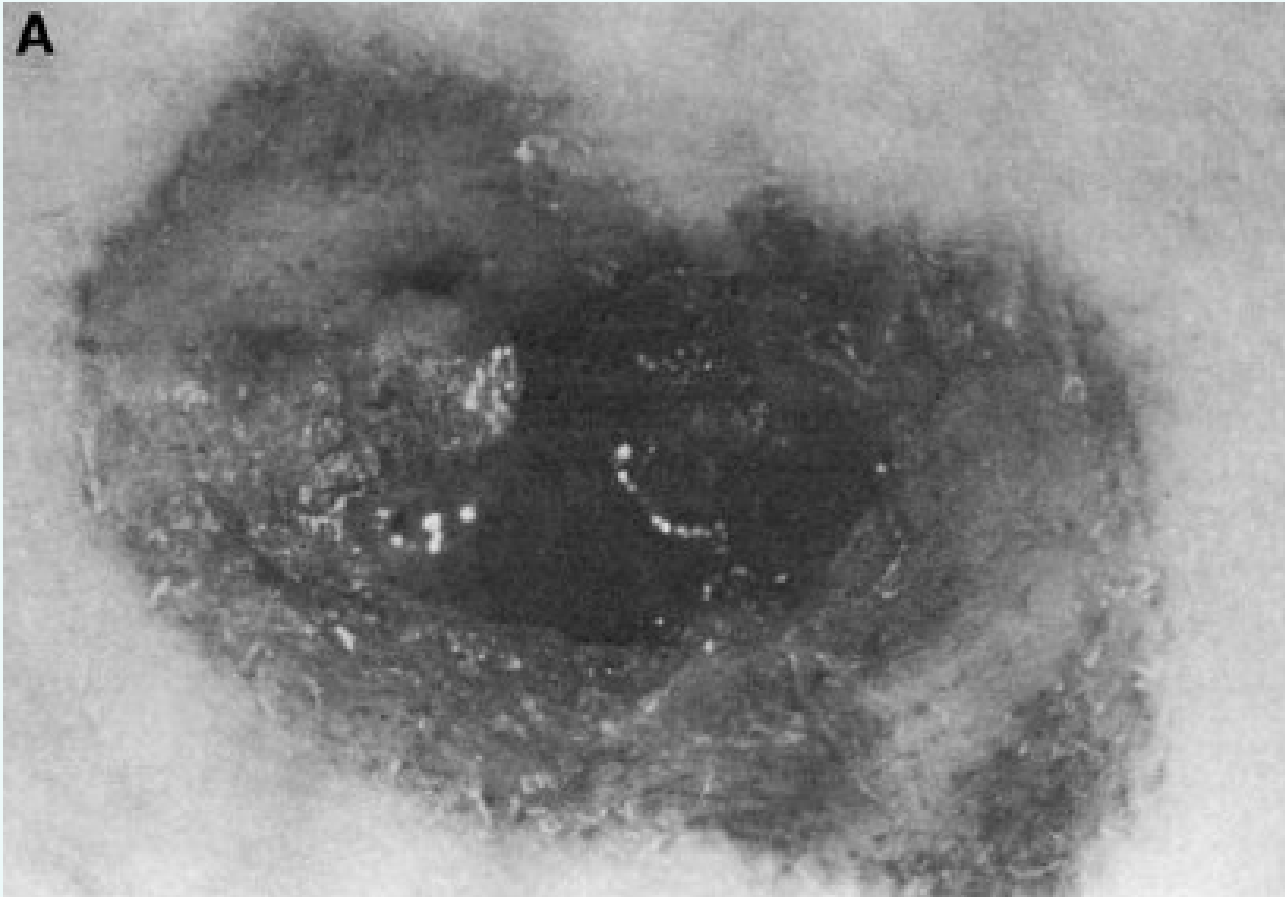


- Giriş göre daha büyük
- Yara dudakları dışa dönük
- Atış artıkları (-)
- Vurma halkası (-)

ÇIKIŞ

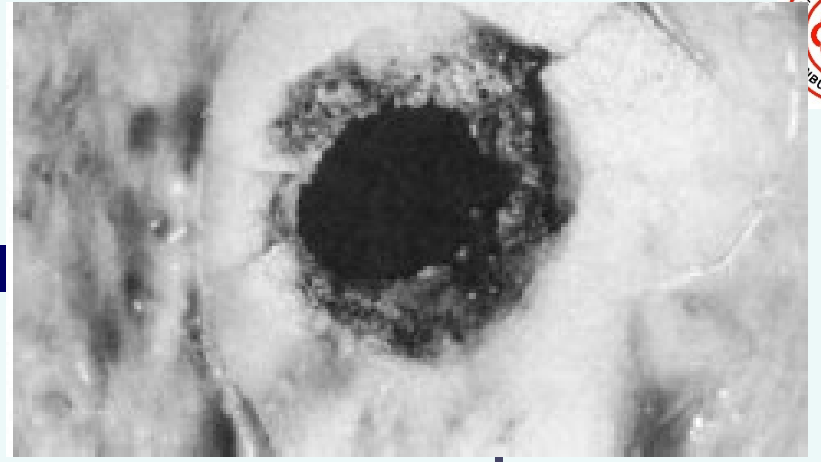
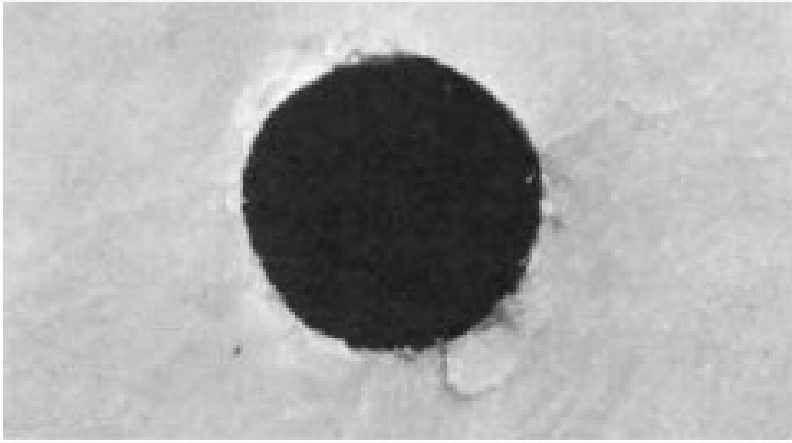


Rubbed exit



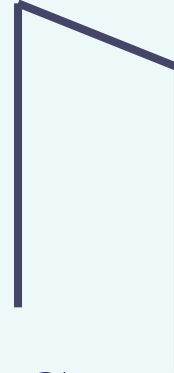
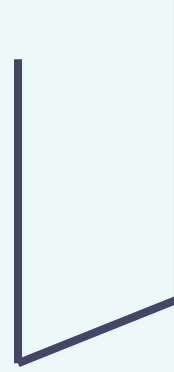
Giriş / Çıkış ?





Giriş

-



Çıkış







ATIŞ MESAFESİ

• BİTİŞİK

• YAKIN

• UZAK

Namlu ucu
ciltle temas halinde

Atış artıklarının
ulaşabildiği mesafe

Atış artıklarının
Ulaşamadığı mesafe

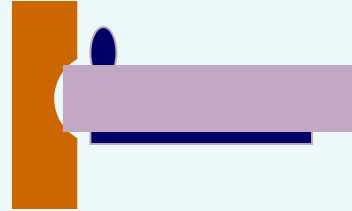
Bitişğe yakın atış
(0-2 cm)



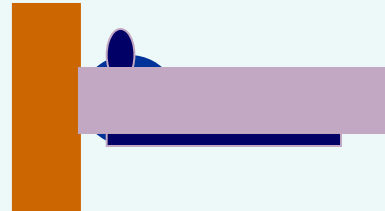
BİTİŞİK ATIŞ

- Namlu ucu cilt ile temas halinde

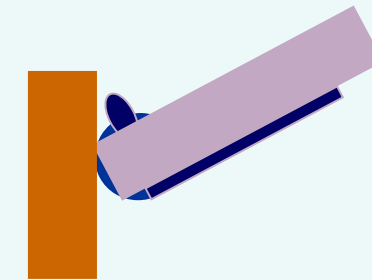
- Sıkı



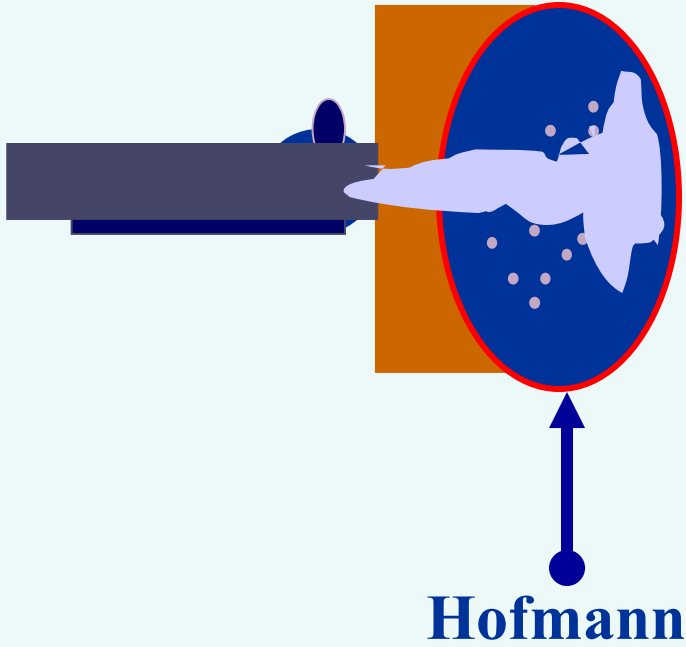
- Gevşek



- Açılı



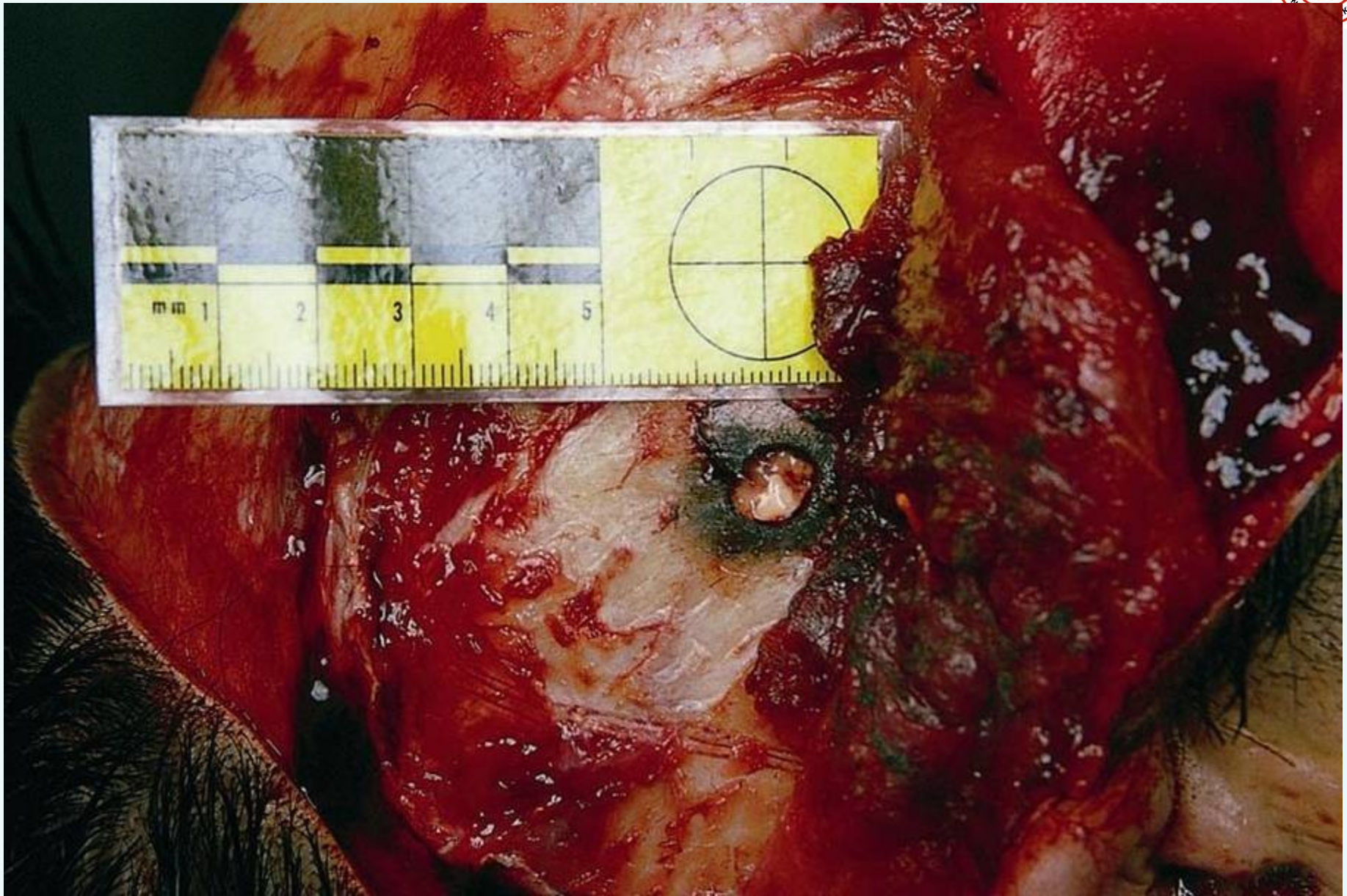
Bitişik Atış



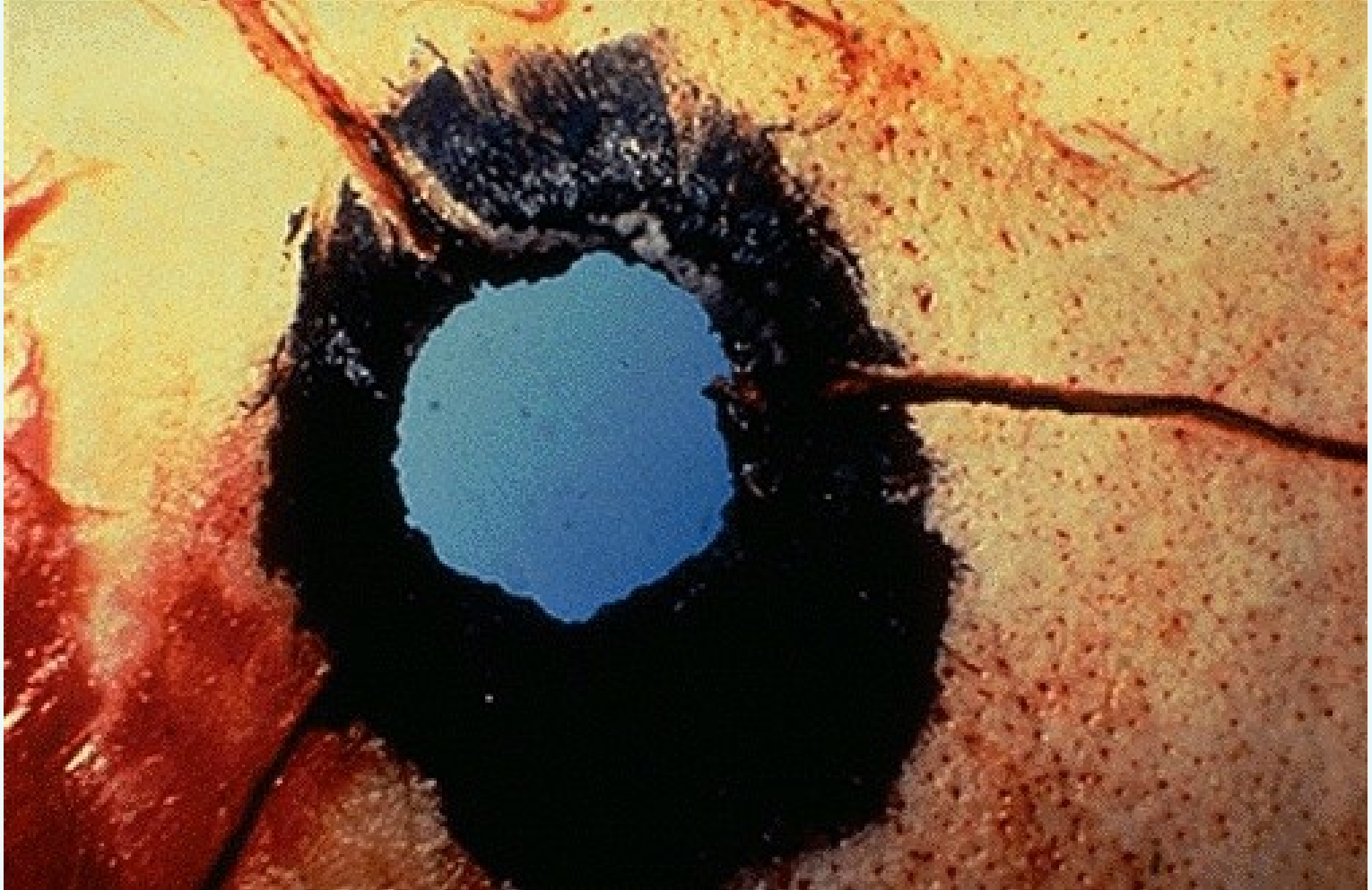


BİTİŞİK ATIŞ - STAMPA İZİ





Bitişik atış ciltaltı



Blast Etki



Yakın Atış



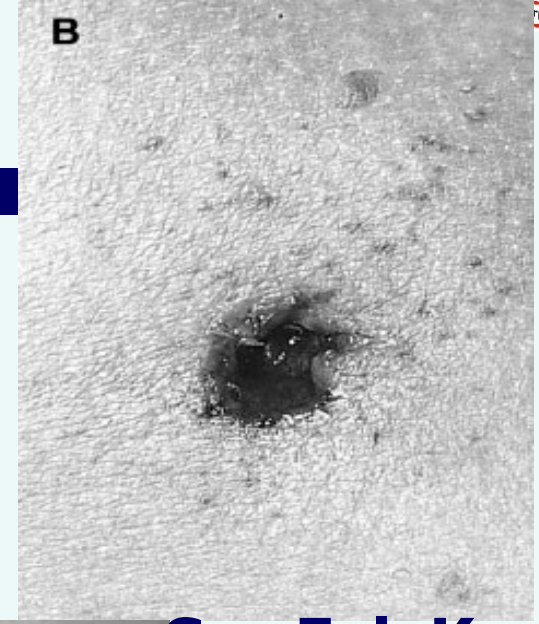
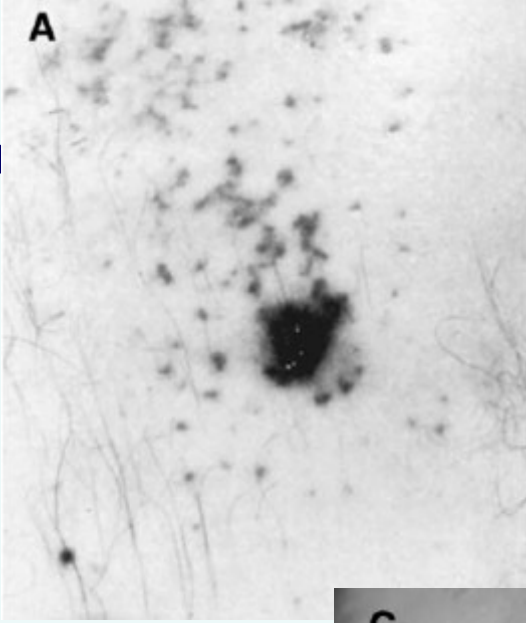
Tatuaj











Sut

İ.B.

Saç Fol. Kan



Bitişğe yakın atış



Yakın Atış



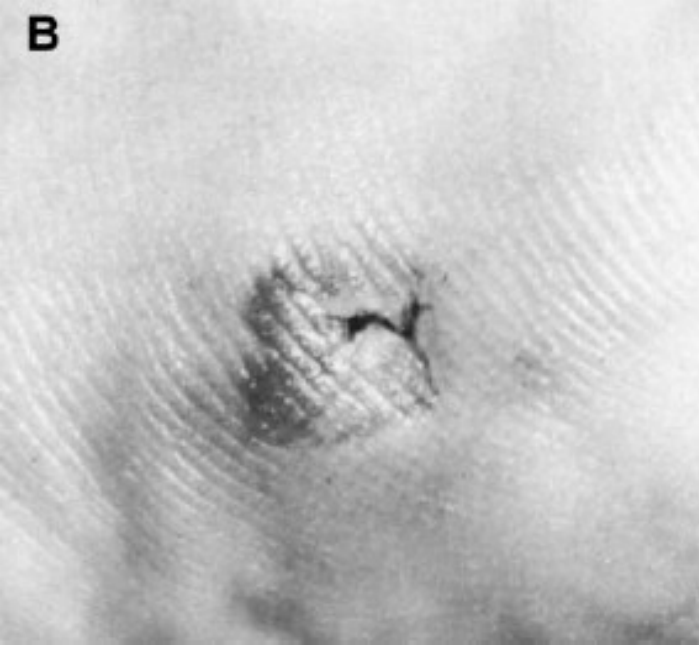
Uzak Atış







Atipik giriş delikleri



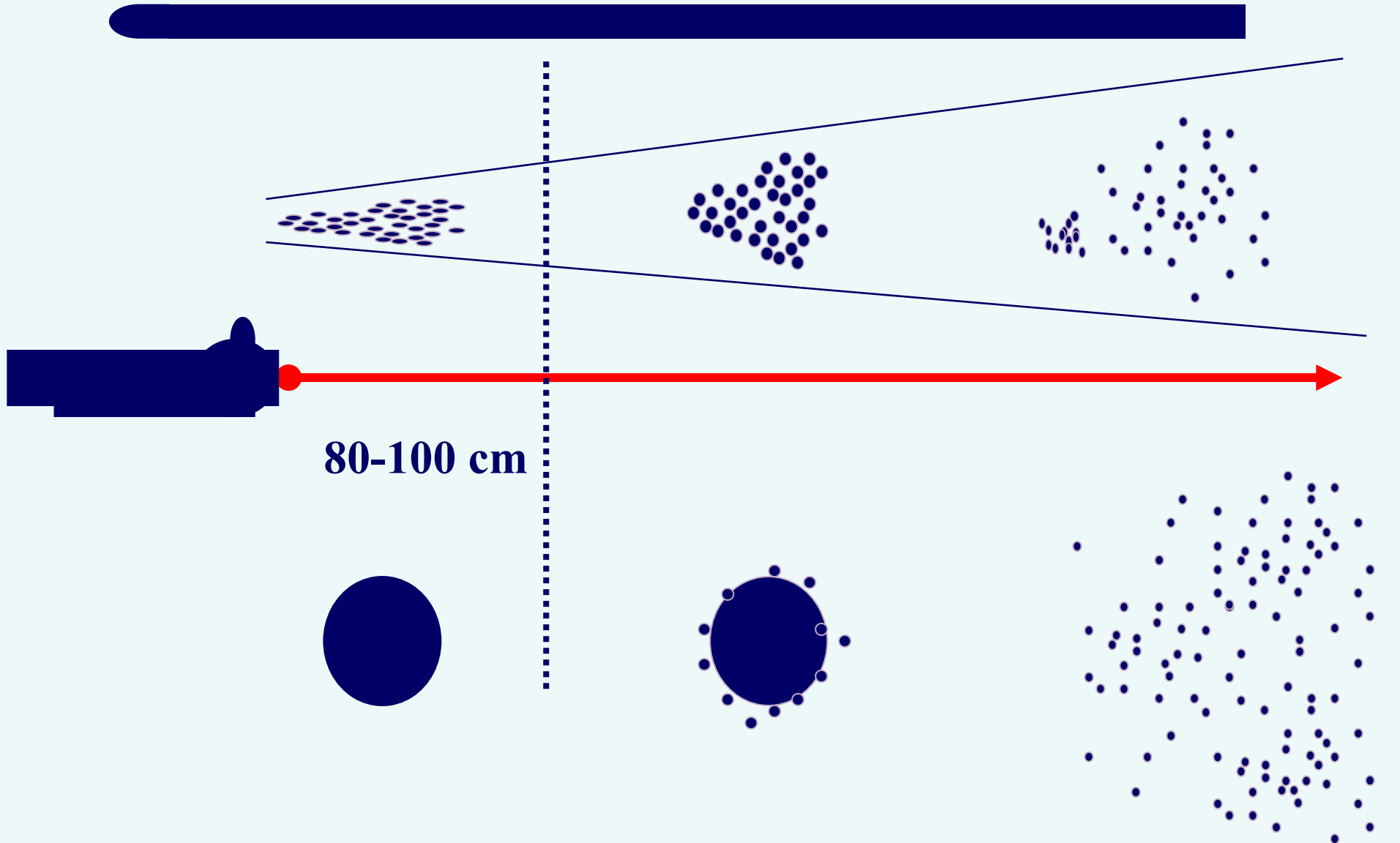
Çıkış deliğini taklit eden atipik giriş



ASMÇ sıyrığı









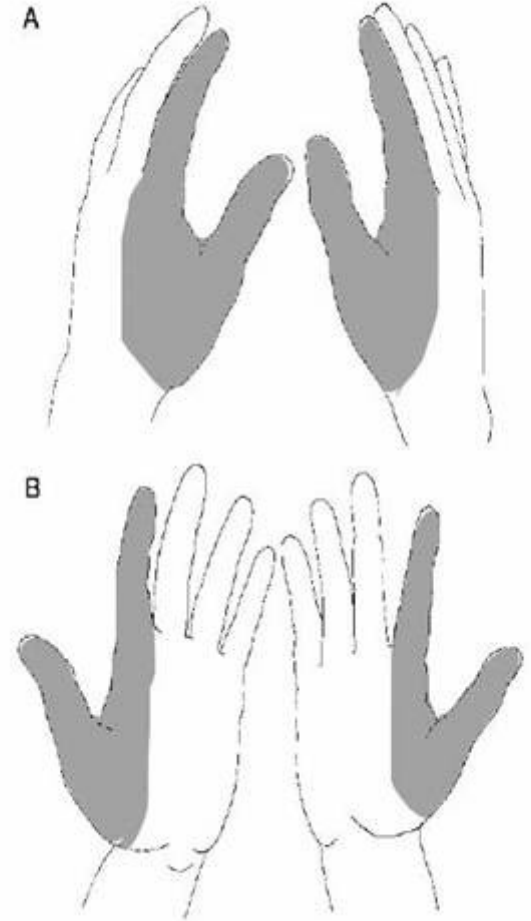


ARA HEDEF ?





Atış artıkları





BİTİŞİK ATIŞ

- Vurma halkası
- Atış artıkları cilt altında

YAKIN ATIŞ

- Vurma halkası
- Atış artıkları cilt üstünde

UZAK ATIŞ

- Vurma halkası
- Atış artığı yok

